

Google Slides: Beyond the Slideshow

Cassie Frost, M.Ed
Assistive Technology Specialist

Google Slides Add-Ons

Slides Progress

Bar

A progress bar
on the bottom
of your slide
deck

- Student engagement
- Anxiety
- Frontloading

Google Slides Add-Ons

Grackle Slides

An accessibility
checker for
Google Slides

- Teacher Tool
- Check-point for
accessibility

Google Slides Add-Ons

Creator Studio

Create animated videos or GIFs from your slide deck

- Student engagement
- Reteach Skills
- Frontloading

Presentation Tools

Present w/ Remote

Chrome Extension: Present with remote- allows you to use your phone as a remote to advance your slides



Presentation Tools

Closed Captioning

When presenting, use the Closed Caption tool to automatically close caption the entire presentation

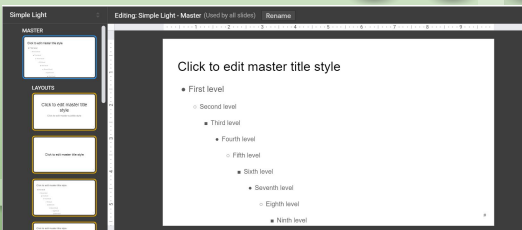
- In present mode:
- Select 'CC'

Creating a Template

Create a custom template for your classroom or specific students.

- Open a new slideshow
- Select "View"
- Select "Master"
- Make changes to these slides
- Choose "Rename" and name your own template

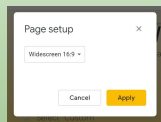
Creating a Template



Creating Handouts/Posters

Use Google Slides to create visually appealing handouts.

- Open new slideshow
- Select "File"
- Select "Page Setup"
- Select the drop down
- Select "Custom"
- Change the page size to the size of paper you desire to use (8.5x11) (11x17)....
- Get Creative!



Creating Visual Schedules

Use Google Slides to create Visual Schedules for students

- ❑ Open new slideshow
- ❑ Follow directions for changing format like the slide above
- ❑ Insert shapes, tables, files, etc

Creating Moveable Worksheets

Use Google Slides to create Moveable Worksheets for students of all ability levels

Why?

When an activity or task is created in a digital format, it is more accessible to a wider range of students.

- ❑ Screen readers
- ❑ Screen enlargement
- ❑ Brightness level
- ❑ Speech to Text

Creating Interactive Lessons

Use Google Slides to create interactive lessons.

Why?

Lessons that include click-to-move items engage students and offer remediation by repeating.

How?

Draw shapes around images and then right click to link to the slide you would like the image to move to.

Thank you for attending!

I welcome questions or comments
any time at my email listed below
or find me on Twitter!

Cassie Frost, M.Ed

cfrost@disruptive-teaching.com

@cfrost_disteach
